

SAFETY INSTRUCTIONS

- Always observe the safety instructions when carrying out work to windows and doors.
- Keep children and people who cannot estimate the dangers away from the point of danger.
- Avoid spilling lubricants onto the floor or leave tools unattended in the working area.

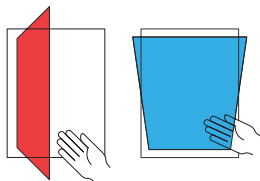
Risk of Injury from Falling Through Open Windows

- Always use stable step ladders.
- Protect yourself against falling out of windows.
- Do not steady yourself or hold on to the opened sash.



Danger of Injury Through Trapping of Body Parts

- Never reach into the opening between the sash and the outer frame when closing windows/doors.



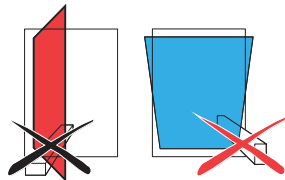
Risk of Injury or Damage from Pressing the Sash Against the Reveal

- Do not press the sash against the window reveal.



Risk of Injury from Trapping Parts of the Body Between the Sash and the Frame

- Do not insert obstructions into the opening between sash and frame.



Risk of Injury and Material Damage from Overloading the Sash

- Do not overload the sash.



Risk of Injury from the Effect of Wind

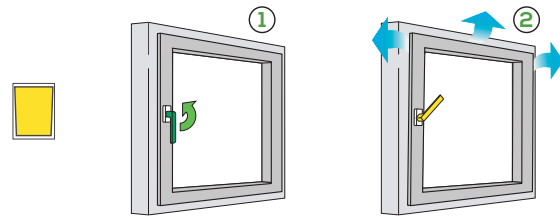
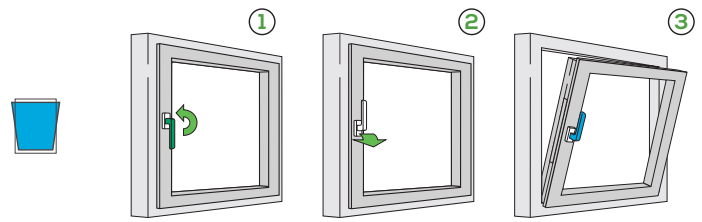
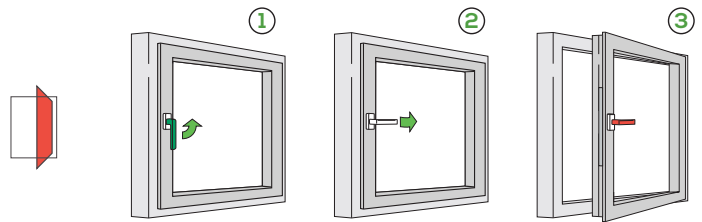
- Prevent wind from acting on the open sash.
- During wind/drafts, close and lock windows.



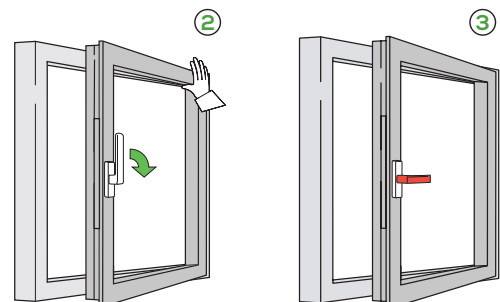
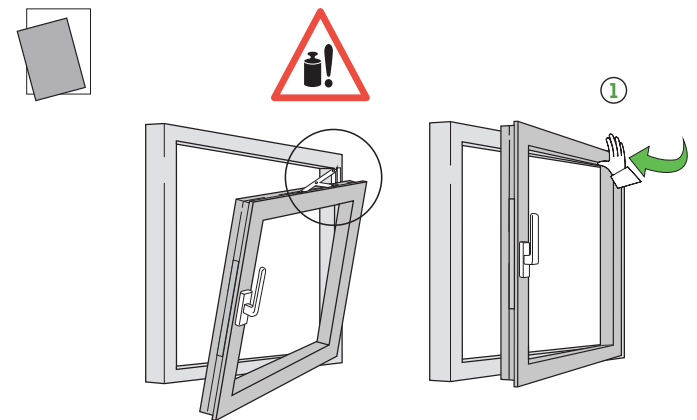
WARNING: Operational malfunction of the window components may result in injury:

- Do not continue to use the window once an operational malfunction has been identified.
- Secure the window and instruct a specialist company to carry out the necessary repairs.

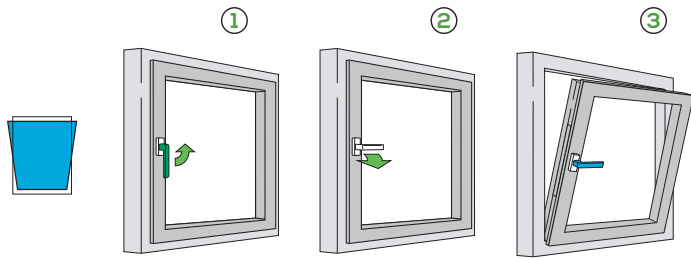
DIRECTIONS FOR USE: TILT & TURN



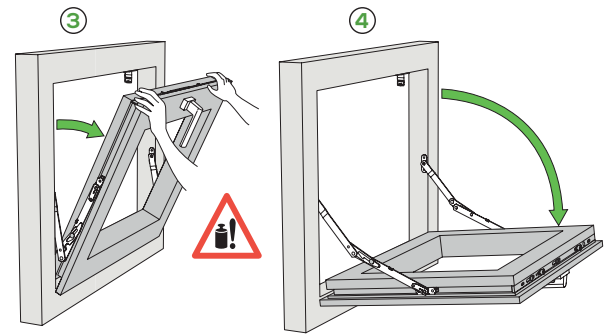
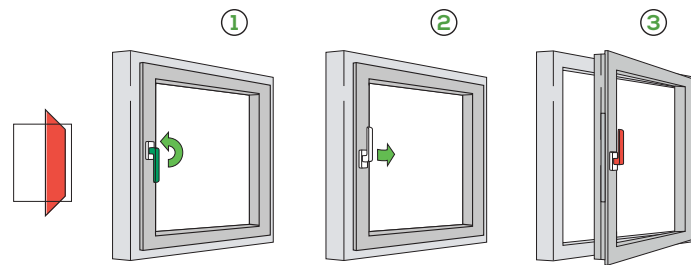
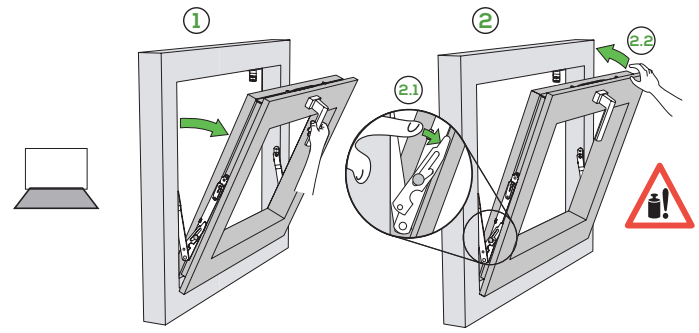
RECTIFYING OPERATING PROBLEMS



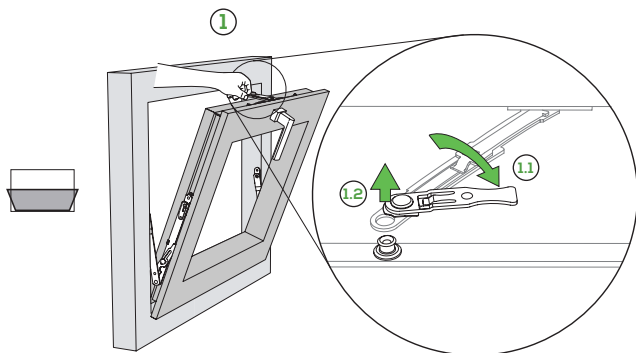
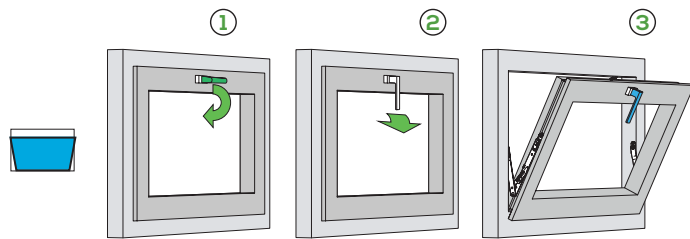
DIRECTIONS FOR USE: TILT BEFORE TURN (TBT)



DIRECTIONS FOR USE: TILT ONLY (CONT.)



DIRECTIONS FOR USE: TILT ONLY



MAINTENANCE: CLEANING

Your windows and portal doors have high-grade SIEGENIA-AUBI fittings. To ensure that they remain in good working condition, even past the guarantee period, we recommend that you inspect and maintain your windows/doors as described below at regular intervals (at least once a year or more often for school and hotel buildings).

Cleaning and Preserving Surfaces

- When treating surfaces (painting or glazing your windows/doors), remove all fittings and protect them from stains and spills.
- Remove any stains or spills immediately, because they could damage the surface protection of the fittings.
- Use only mild, pH-neutral, diluted cleaning agents. **NEVER** use sharp objects, abrasive agents, or aggressive cleaning agents (such as vinegar or acidic cleaning agents), as they could damage the corrosion protection of the fittings.
- When cleaning, ensure that no water runs into the fittings.
- Dry the fittings thoroughly after cleaning and oil the surface with a non-acidic and non-resinous oil by wiping them with a cloth soaked in oil.

"TITAN Extreme" Surface

If your fittings have the TITAN Extreme surface:

- Check the surface for damage that penetrates the paint layer and repair it using the assembly and repair paint.
- The places to be painted must be clean, dry, and free of grease and rust.

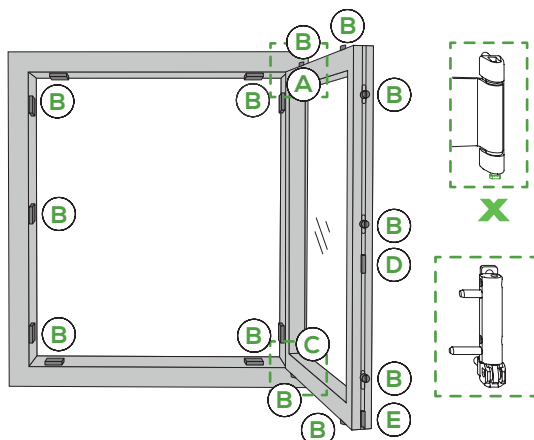
MAINTENANCE: INSPECTION & LUBRICATION

Check that all fittings (☒) are secure and check for wear:

- Check that the top hinge pin (X) is pushed in, up to the stop. If it is not, slide it up to the stop manually.
- Check for loose fixing screws and check that the handle is secure. Tighten the loose fixing screws using an appropriate tool. **IMPORTANT:** Do not overtighten the screws.
- Have any worn/damaged fittings or overtightened screws replaced by a specialist company.

Grease or oil all movable fittings and all locking points:

- Use only acid-free and resin-free oil or grease.
- Use a grease spray on the movable parts in the window sash and spray into all openings in the fittings.
- Then, move the fittings into position several times until the grease is distributed. Wipe off any excess oil or grease.
- Grease the striker plates in the window frame using a firmer grease (Consistency Class 2 in accordance with DIN 51818) in the places where the locking cam engages with the striker plate.



LUBRICATION POINTS

